



Jovyal



*Perfectly made in Italy*



*"fill the beauty inside"*

Medixa



Medixa is specialized in providing products of the highest quality, security and efficacy. Technologically advanced production, certified under the European standards, ensures innovative products and cutting-edge technologies for aesthetic medicine. Medixa offers a comprehensive range of customer services and training to physicians, enabling them to perform their art at the highest level with global satisfaction for patients and practitioners. We provide the full service from education till the marketing support that allows us to satisfy all your professional questions and requirements.

*It is proved!*

medixa®



INJECTABLE PRODUCTS  
BASED ON FREE HAND CROSS-LINKED HYALURONIC ACID

CHEMICAL AND PHYSICAL  
PROPERTIES

Monophasic and Biphasic  
Cross-linked Hyaluronan



	Hydra	Touch	Shape Lips	Premium	Extreme
Active Component	LINEAR HYALURONIC ACID	CROSS-LINKED HYALURONIC ACID	CROSS-LINKED HYALURONIC ACID	CROSS-LINKED HYALURONIC ACID	CROSS-LINKED HYALURONIC ACID
HA Concentration	16 mg/ml	25 mg/ml	25 mg/ml	25 mg/ml	25 mg/ml
Regulating Agent	-	BDDE (residual < 0,1 ppm)	BDDE (residual < 0,1 ppm)	BDDE (residual < 0,1 ppm)	BDDE (residual < 0,1 ppm)
Cross-linked	○○○○○	●●○○○	●●●○○	●●●●○	●●●●●
Molecular Weight	1 M Da + 500 K Da + 200 K Da	2 M Da + 1 M Da + 0,5 M Da	1 M Da + 0,5 M Da	2 M Da + 1 M Da	2 M Da + 1 M Da
Free Hyaluronic acid	100%	10% 0,5 M Da	-	-	-
Volume	1 ml	1,1 ml	1 ml	1 ml	1 ml
Needle	33G 4mm	27G 19mm - 30G 13mm	27G 13mm - 30G 13 mm	27G 19mm - 27G 13 mm	27G 19mm - 27G 13mm
Endotoxins	< 20 EU/ml	< 20 EU/ml	< 20 EU/ml	< 20 EU/ml	< 20 EU/ml
Durations	●○○○○	●●●○○	●●●○○	●●●●○	●●●●●
Deep of injection	■□□□□	■□□□□	■□□□□	■□□□□	■□□□□
Indications	Biorivitalization	Superficial linear and small volume	Lips and lip area	Lip volume and deep wrinkles	Cheekbones, chin, nose
Origin	BACTERIC BIO-FERMENTATION	BACTERIC BIO-FERMENTATION	BACTERIC BIO-FERMENTATION	BACTERIC BIO-FERMENTATION	BACTERIC BIO-FERMENTATION
Aspect	TRANSPARENT GEL	TRANSPARENT GEL	TRANSPARENT GEL	TRANSPARENT GEL	TRANSPARENT GEL
Elastic moduls G'	30 Pa	30 Pa	40 Pa	100 Pa	200 Pa
Viscous moduls G''	10 Pa	10 Pa	15 Pa	20 Pa	40 Pa
Extrusion Force	3N - 8N	18N± 3	20N± 3	23N± 3	30N± 3
Osmolality	270-320 mOsm/Kg	270-320 mOsm/Kg	270-320 mOsm/Kg	270-320 mOsm/Kg	270-320 mOsm/Kg
pH	7 - 7,5	6,8 - 7,4	6,8 - 7,4	6,8 - 7,4	6,8 - 7,4
Sterilization	autoclave	autoclave	autoclave	autoclave	autoclave
Proteic level	< 0.1%	< 0.1%	< 0.1%	< 0.1%	< 0.1%
	Hydra	Touch	Shape Lips	Premium	Extreme

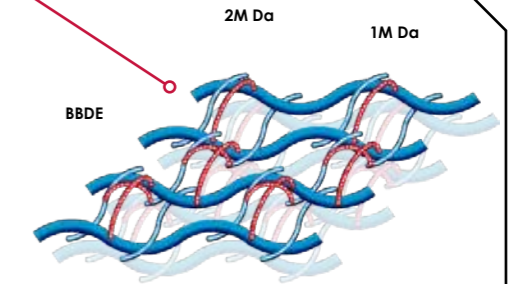
TECHNICAL FEATURES

TECHNICAL SPECIFICATION

CROSS-LINKING

Mixing different MW of HA we obtain a strong 3D Matrix

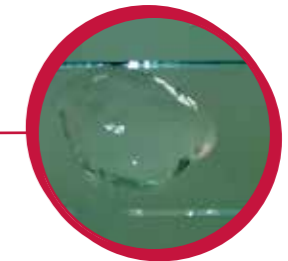
The long time of cross-linking allows to better control the degree of cross-linking using a lower quantity of the crosslinking agent



MORE HOMOGENEITY and SAFETY  
SMALL PARTICLES  
BETTER DISTRIBUTION WITHIN TISSUES

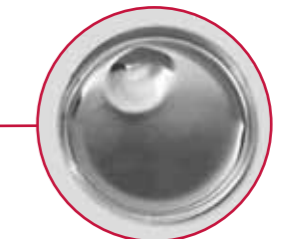
MONOPHASIC UNSIZED

ONLY ONE FLUID PHASE (gel)  
1-20 micron particles



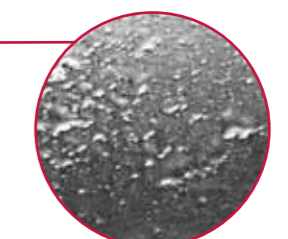
MONOPHASIC SIZED

ONLY ONE FLUID PHASE (gel)  
40-80 micron particles



BIPHASIC

PARTICLE SIZE  
500-600 micron





NEEDLE 30G x 13 mm 



NEEDLE 27G x 19 mm 



Touch  


**The product is solely intended to be used by medical personnel. Do not use for applications other than indicated in this package leaflet.**

**DESCRIPTION**

Jovyal Touch is a resorbable medical device (sterile, apyrogenic and physiological gel) to be used as filler for the correction of medium and deep skin sagging on the face and to increase lip volume and contour. The main component is cross-linked hyaluronic acid of non-animal origin, produced by bacterial fermentation.

**COMPOSITION**

Cross-linked hyaluronic acid 25 mg/ml  
 Phosphate buffered saline, Water for injections solutions q.s.1 g

**PACKAGE 1x1.1ml**

- package leaflet
- sealed blister containing 1 single-dose/single-use pre-filled sterile syringe
- adhesive tabs to be applied to the patient card for product traceability
- 2 needles

**METHOD OF ACTION**

Jovyal Touch is injected into the skin tissue for the supplementation of the extracellular matrix and to increase intracutaneous volume, or for the treatment of cutaneous depressions due to wrinkles and scarring.

**INTENDED USE**

Jovyal Touch is an implantable medical device produced in compliance with Directive 93/42/EEC MDD, intended for the treatment of imperfections in the following areas of the face:

- nasolabial folds
  - perioral wrinkles
  - acne and facial scars
  - glabellar wrinkles
  - forehead wrinkles
  - areas of the face requiring enrichment of the facial tissue (ex. cheeks, chin, cheekbones, lips) with a temporary increase in volume of the soft tissues.
- The outcomes of the procedure depend on skin type and the nature of the blemishes, with results being the better the less noticeable the nature of the defect.

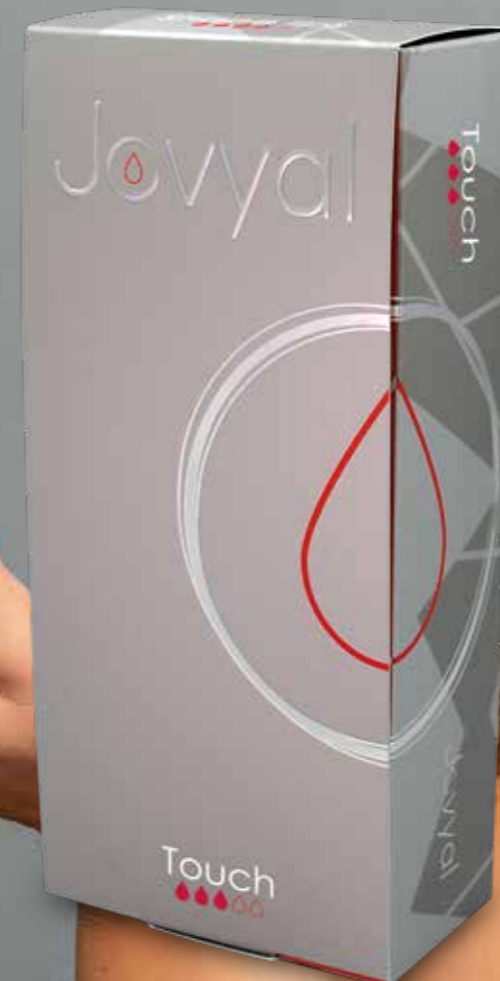
CHEEKS

PERI-ZYGOMATIC AREA  
 CORRECTION OF THE ASYMMETRIES

HANDS

MANDIBULAR AREA  
 CORRECTION OF THE ASYMMETRIES

CROW'S FEET





NEEDLE 27G x 13 mm 



NEEDLE 27G x 19 mm 



## Premium



**The product is solely intended to be used by medical personnel. Do not use for applications other than indicated in this package leaflet.**

### DESCRIPTION

Jovyal Premium is a resorbable medical device (sterile, apyrogenic and physiological gel) to be used as filler for the correction of medium and deep skin sagging on the face and to increase lip volume and contour. The main component is cross-linked hyaluronic acid of non-animal origin, produced by bacterial fermentation.

### COMPOSITION

Cross-linked hyaluronic acid 25 mg/ml  
 Phosphate buffered saline, Water for injections solutions q.s.1 g

### PACKAGE 1x1ml

- leaflet
- sealed blister containing 1 single-dose/single-use pre-filled sterile syringe
- adhesive tabs to be applied to the patient card for product traceability
- 2 needles

### METHOD OF ACTION

Jovyal Premium is injected into the skin tissue for the supplementation of the extracellular matrix and to increase intracutaneous volume, or for the treatment of cutaneous depressions due to wrinkles and scarring.

### INTENDED USE

Jovyal Premium is an implantable medical device produced in compliance with Directive 93/42/EEC MDD, intended for the treatment of imperfections in the following areas of the face:

- nasolabial folds
  - perioral wrinkles
  - acne and facial scars
  - glabellar wrinkles
  - forehead wrinkles
  - areas of the face requiring enrichment of the facial tissue (ex. cheeks, chin, cheekbones, lips) with a temporary increase in volume of the soft tissues.
- The outcomes of the procedure depend on skin type and the nature of the blemishes, with results being the better the less noticeable the nature of the defect.

### WRINKLES

Reduction of medium deep

### ZYGOMATIC

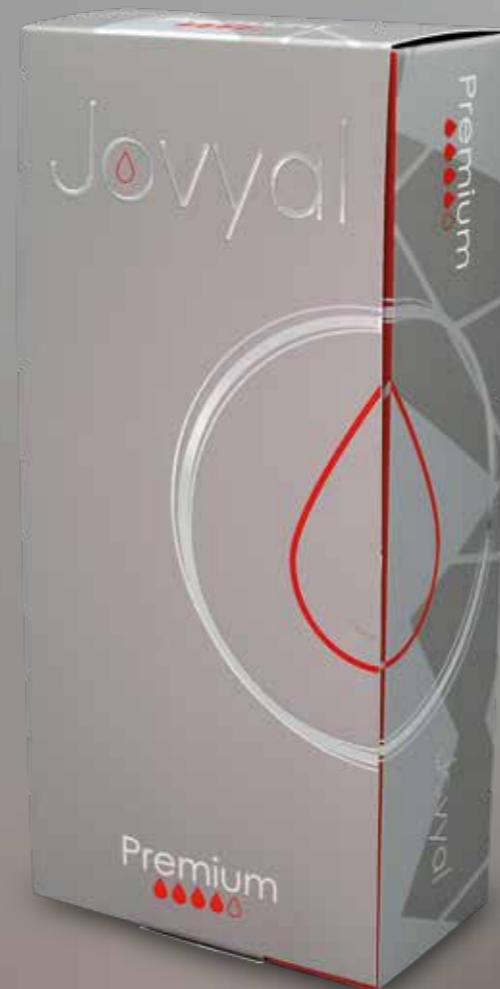
Correction of lower

### MOUTH CORNERS

Correction

### CHIN AREA

Correction





NEEDLE 27G x 13 mm



NEEDLE 30G x 13 mm



## Shape lips

**The product is solely intended to be used by medical personnel. Do not use for applications other than indicated in this package leaflet.**

### DESCRIPTION

Jovyal Shape Lips is a resorbable medical device (sterile, apyrogenic and physiological gel) to be used as filler for the correction of medium and deep skin sagging on the face and to increase lip volume and contour. The main component is cross-linked hyaluronic acid of non-animal origin, produced by bacterial fermentation.

### COMPOSITION

Cross-linked hyaluronic acid 25 mg/ml  
Phosphate buffered saline, Water for injections solutions q.s. 1 g

### PACKAGE 1x1ml

- leaflet
- sealed blister containing 1 single-dose/single-use pre-filled sterile syringe
- adhesive tabs to be applied to the patient card for product traceability
- 2 needles

### METHOD OF ACTION

Jovyal Shape Lips is injected into the skin tissue for the supplementation of the extracellular matrix and to increase intracutaneous volume, or for the treatment of cutaneous depressions due to wrinkles and scarring.

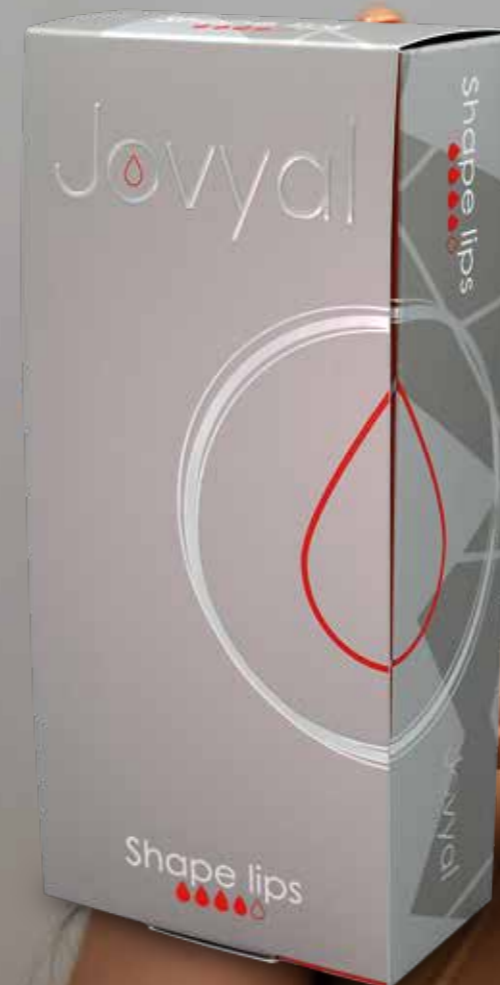
### INTENDED USE

Jovyal Shape Lips is an implantable medical device produced in compliance with Directive 93/42/EEC MDD, intended for the treatment of imperfections in the following areas of the face:

- nasolabial folds
  - perioral wrinkles
  - acne and facial scars
  - glabellar wrinkles
  - forehead wrinkles
  - areas of the face requiring enrichment of the facial tissue (ex. cheeks, chin, cheekbones, lips) with a temporary increase in volume of the soft tissues.
- The outcomes of the procedure depend on skin type and the nature of the blemishes, with results being the better the less noticeable the nature of the defect.

### LIPS

- STRONG IDRATATION
- LIGHT VOLUME
- IMPROVED SHAPE
- NATURAL EVERSION
- CORRECTION OF THE ASYMMETRIES





NEEDLE 27G x 13 mm 



NEEDLE 27G x 19 mm 



## Extreme



**The product is solely intended to be used by medical personnel. Do not use for applications other than indicated in this package leaflet.**

### DESCRIPTION

Jovyal Extreme is a resorbable medical device (sterile, apyrogenic and physiological gel) to be used as filler for the correction of deep skin sagging on the face and to restore volume. The main component is cross-linked hyaluronic acid of non-animal origin, produced by bacterial fermentation.

### COMPOSITION

Cross-linked hyaluronic acid 25 mg/ml  
 Phosphate buffered saline, Water for injections solutions q.s. 1 g

### PACKAGE 1x1ml

- leaflet
- sealed blister containing 1 single-dose/single-use pre-filled sterile syringe
- adhesive tabs to be applied to the patient card for product traceability.
- 2 needles

### METHOD OF ACTION

Jovyal Extreme is injected into the subcutaneous tissue for the supplementation of the extracellular matrix and to increase tissue volume, or for the treatment of cutaneous depressions due to wrinkles, scarring and hypo-volumes.

### INTENDED USE

Jovyal Extreme is a medical device produced in compliance with Directive 93/42/EEC MDD, intended for the treatment of imperfections in the following areas of the face:

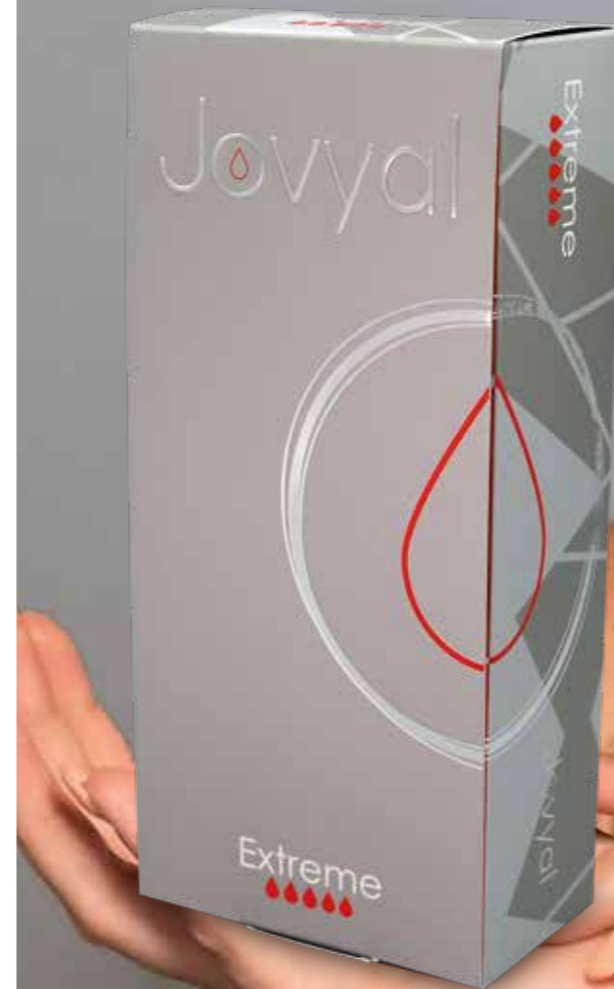
- nasolabial folds
- acne or post-trauma scarring
- areas of the face requiring enrichment of the facial tissue (ex. cheeks, chin, cheekbones) with a temporary increase in volume of the soft tissues. The outcomes of the procedure depend on skin type and the nature of the blemishes, with results being better the less noticeable the nature of the defect.

NASAL  
 CORRECTION OF DEPRESSED CORNER

FRONTAL  
 MALAR AREA

CHEEKBONES  
 VOLUMETRIC AUGMENTATION

MANDIBULAR  
 RE-DEFINITION OF CONTOUR







3 NEEDLES 33G x 4 mm 



Hydra  


**The product is solely intended to be used by medical personnel. Do not use for applications other than indicated in this package leaflet.**

**DESCRIPTION**

Jovyal Hydra is a resorbable medical device (sterile, apyrogenic and physiological gel) to be used for skin hydration and to correct superficial skin imperfections on face and body and in the dermal tissue repair process. The main component is Hyaluronic Acid sodium salt of non-animal origin, produced by bacterial fermentation.

**COMPOSITION**

Hyaluronic acid sodium salt 16 mg/ml  
 Phosphate buffer, sodium chloride, water for injectable solutions q.s. 1 g

**PACKAGE 3x1ml**

- leaflet
- 3 sealed blisters each containing 1 single-dose/single-use pre-filled sterile syringe
- adhesive tabs to be applied to the patient card for product traceability
- 3 needles

**METHOD OF ACTION**

Jovyal Hydra is injected into the dermis for the supplementation of the extracellular matrix and thanks to the hygroscopic properties of hyaluronic acid it restores the optimal physiological Jovyal Hydration of the skin.

**INTENDED USE**

Jovyal Hydra is a medical device produced in compliance with Directive 93/42/EEC and subsequent amendments and additions, intended for hydration of the skin and correction of superficial skin blemishes and in the dermal tissue repair process. It is particularly indicated in cases of scarring after superficial skin trauma (ex. acne and chicken pox scars) or stretch marks.

The outcomes of the procedure depend on skin type and the nature of the blemishes, with results being the better the less noticeable the nature of the defect.

SUPERFICIAL LINEAR  
 TECHNIQUE

MICRO-PAPULAR  
 TECHNIQUE

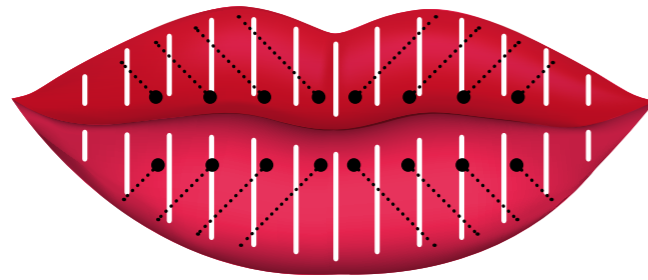
LINEAR MICRO-PAPULAR  
 TECHNIQUE





### DREAM KISS PROTOCOL

Premium + Shape lips  
 ●●●●●      ●●●●●



**Result**  
**SOFT KISS**

**Combined Technique**

2 Jovyal Association: **Premium** with vertical structural pillars technique, and **Shape Lips** with retrograde drop technique.

### ALTERNATIVE LIFTING EFFECT PROTOCOL

2 x Touch  
 ●●●●●

**Result**  
**LIFTING EFFECT**

**2 FIP - Fan Injection Points**

Thanks to the presence of 2.5% in free hyaluronic acid and 22.5% crosslinked, we can obtain a lifting and hydrating effect with a 2 Fin Injection points:

**1<sup>st</sup> Point in zygomatic area**

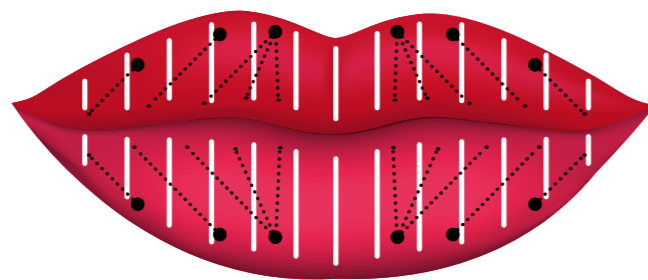
**2<sup>nd</sup> Point in mandibular area**

**Optional:** a 27G 38mm Cannula can be used



### DREAM LIPS PROTOCOL

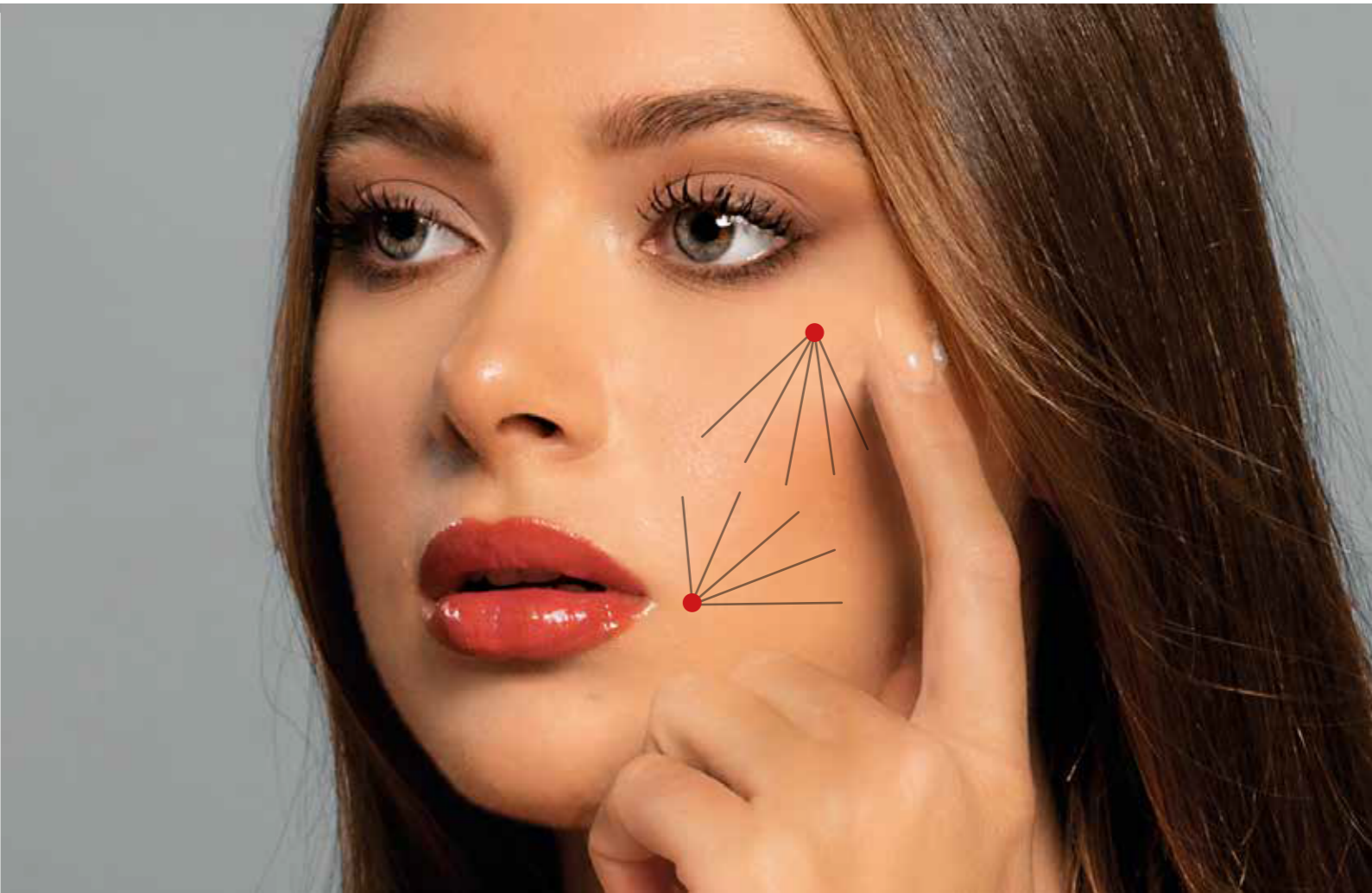
Shape lips + Premium  
 ●●●●●      ●●●●●



**Result**  
**PERFECT SHAPE LIPS**

**Combined Technique**

2 Jovyal Association: **Premium** with vertical structural pillars technique, and **Shape Lips** with retrograde drop technique.



“To look at a thing  
is very different from seeing a thing.  
One does not see anything  
until one sees its beauty”

Oscar Wilde



**Medixa srl**

Via Figliola, 57 - S. Sebastiano al V. (NA) - Italy  
Tel. 0812293463 - Info@medixasrl.com

 Medixa srl  medixa\_srl

[www.medixasrl.com](http://www.medixasrl.com)